

# Quality build, turn-key service, affordable price!



LIVING POINT 119

119, 28 m<sup>2</sup>



*energy-efficient*

**Quality and comfort  
at a very attractive price**

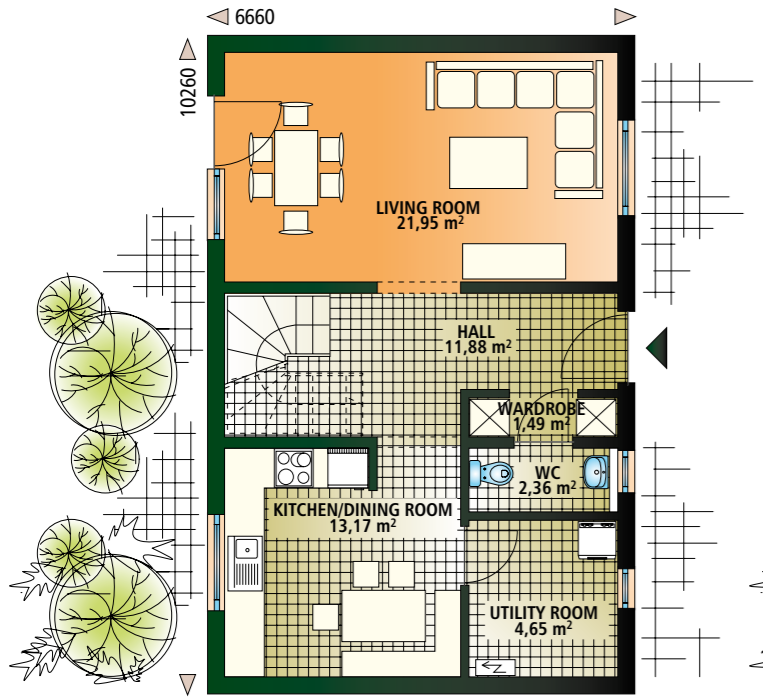
- Contemporary architecture
- Practical and energy-efficient design



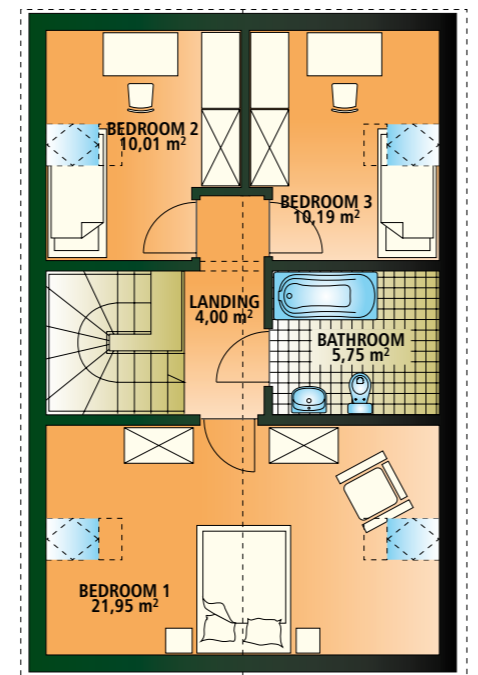
Completely at home.



 **energy-efficient**



**GROUND FLOOR 59.64 m<sup>2</sup>**



**FIRST FLOOR 59.64 m<sup>2</sup>**

## It couldn't be simpler building your own Dan-Wood home.

With Dan-Wood's new LIVING range you have a choice of detached or terraced houses, a huge choice of interior design options, and thermal efficiency which is second to none. Better yet, it can all be yours at a very affordable, fixed price.

Our secret to keeping the prices low is to give you more choices. Your Dan-Wood LIVING house comes complete with everything – except the kitchen, floor coverings and groundworks. We like to leave these to you, so you can make choices to fit your own budget.

Everything else – including the construction from our team of multi-skilled craftsmen – is included in the price, so all you have to do is turn the key.

**LIVING POINT 119**

**119, 28 m<sup>2</sup>**

# LIVING PARK 119

119, 28 m<sup>2</sup>

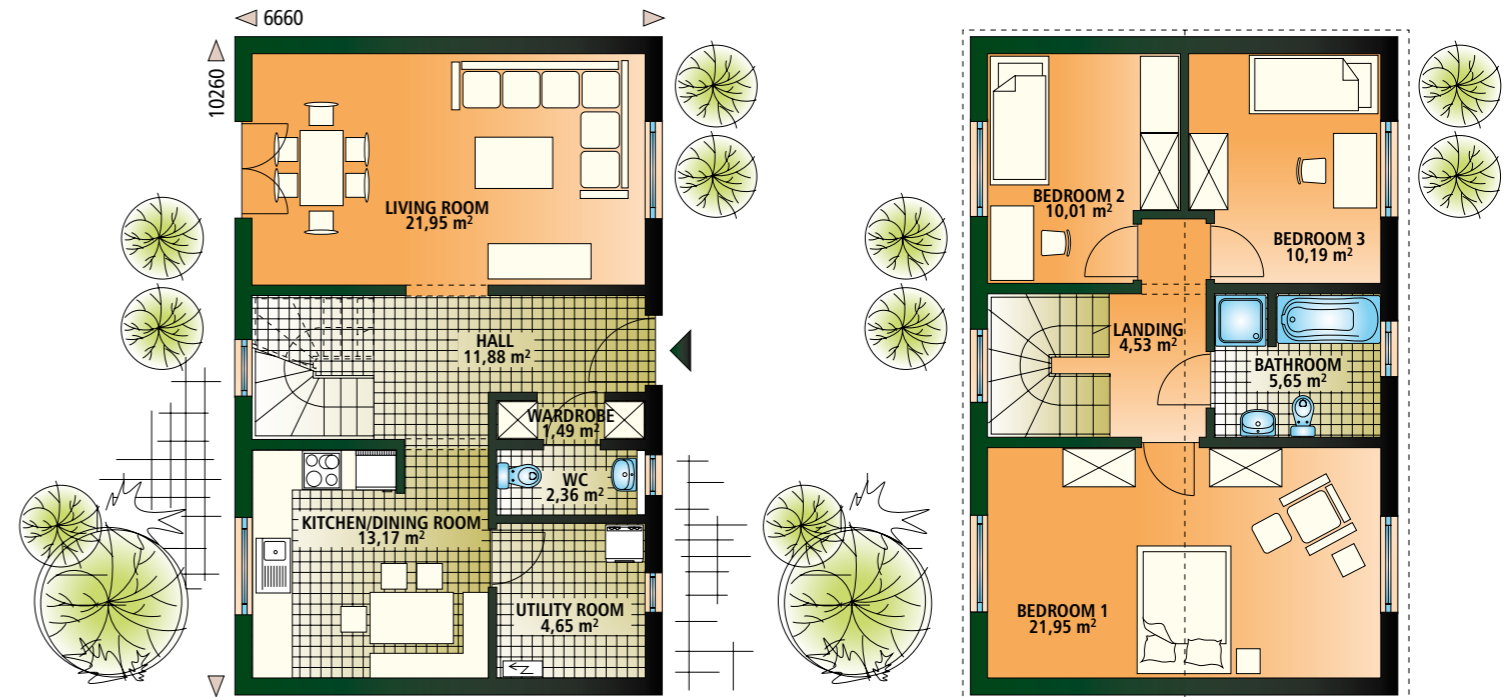


The LIVING range design is simple but effective. Exteriors are clean and minimalist, with designs that meet UK building regulations.

Interiors are practical and spacious, and most designs have open plan dining and living areas. You can individualise your home with modern and practical design features like timber staircases, large terraced windows and contemporary lighting.

Dan-Wood's LIVING houses are economical to build – and equally eco-friendly to run. Dan-Wood's superlative \*heat insulation uses precision-engineered Closed Insulated Panel technology, designed to provide exceptional thermal efficiency so you can be comfortable all year round, and not have to worry about your heating bills.

All Dan-Wood houses have a 20-year structural warranty.



GROUND FLOOR 59,64 m<sup>2</sup>

FIRST FLOOR 59,64 m<sup>2</sup>



*energy-efficient*



## LIVING POINT 74

73,90 m<sup>2</sup>

The Dan-Wood LIVING POINT 74 makes a perfect starter home. This modern and practical design features two bedrooms, a kitchen/dining room with exterior door, living room and bathroom.

Don't forget, you can also choose from a wide range of styles in sanitaryware, ironmongery, lighting, decoration and coloured render to individualise your home exactly the way you want it.

Or, if you need some additional space, why not consider a car port, balcony or sun room as an optional extra? We provide the quality and affordability – you have the flexibility and choice.



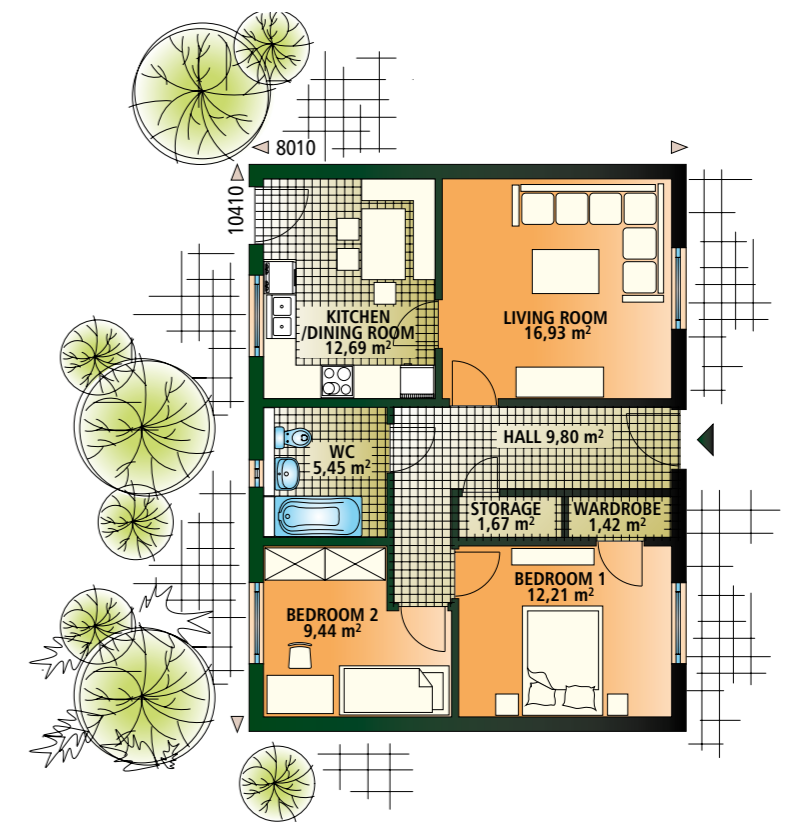
## Dan-Wood's timber frame homes far exceed UK energy efficiency regulations. Why?

- Super thermal wall systems provide vastly superior U-Values (rate of heat loss)
- Roof insulation is superior to the minimum allowed under UK building regulations
- Closed Insulated Panel (CIPs) technology withstands temperatures of minus 30 degrees
- Modern, energy-efficient heating systems

**P.S. You'll love your heating bills...!**



*energy-efficient*



**GROUND FLOOR 73,90 m<sup>2</sup>**

# LIVING POINT 117

117,01 m<sup>2</sup>

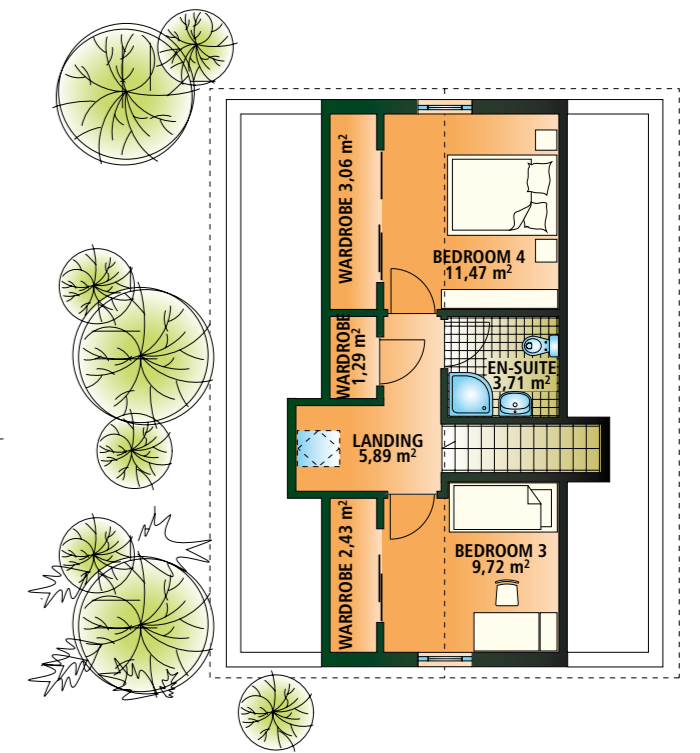
The one-and-a-half storey LIVING POINT 117 is simple, yet deceptively spacious. The design includes four bedrooms, two bathrooms and a kitchen/dining room with an exterior door to the garden. The upper level has two bedrooms and its own bathroom – ideal for a growing family.

Again, thanks to Dan-Wood's superior heat retention and air tightness capabilities you can also benefit from extremely low running costs, knowing that you're also doing your bit to reduce your carbon footprint.

Double-glazed windows are standard with Dan-Wood houses, but to further enhance your green credentials you can choose from other optional extras, like solar panels, geothermal heat pumps and heat recovery systems.



**GROUND FLOOR 73,90 m<sup>2</sup>**



**FIRST FLOOR 43,11 m<sup>2</sup>**



*energy-efficient*

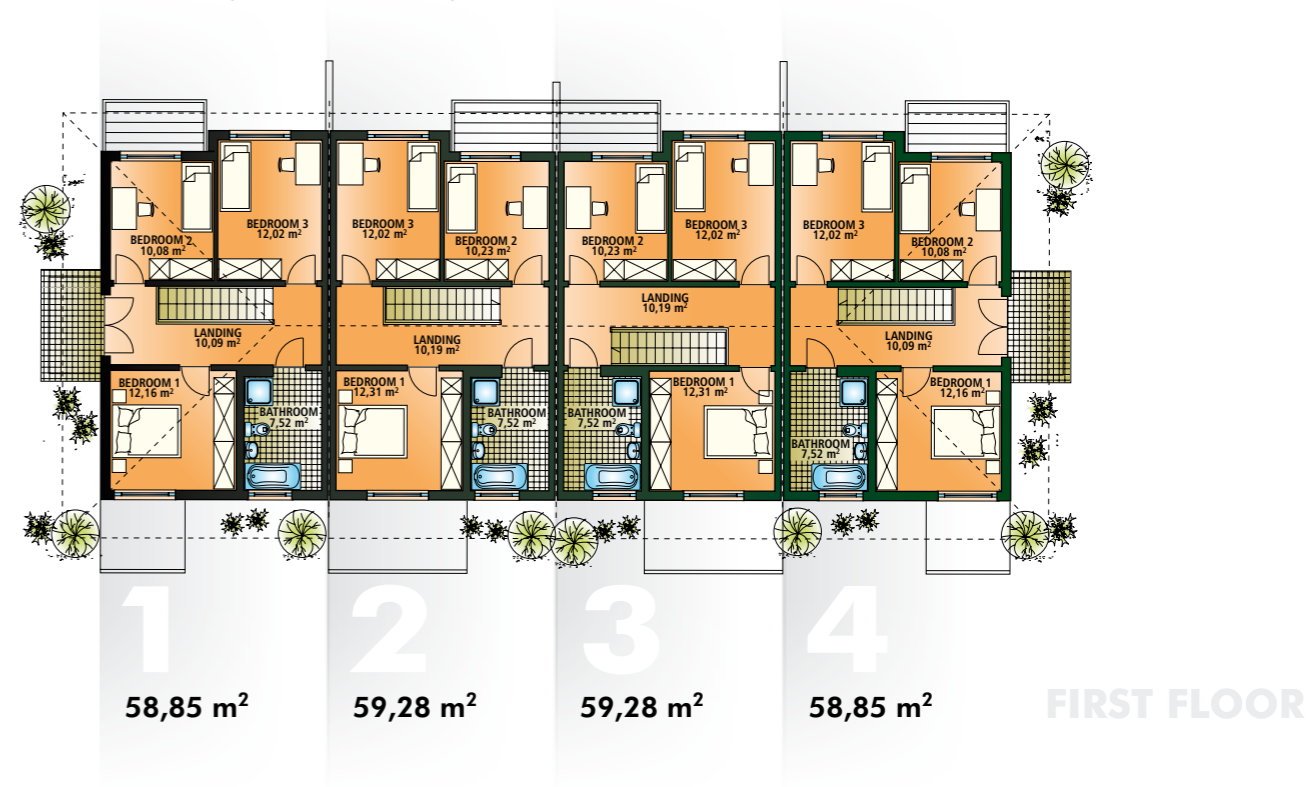




energy-efficient

## Attractive terraces from the LIVING range

Dan-Wood's LIVING range also comes in terraced dwellings. These three-bedroomed houses make ideal investments for developers. Like the detached LIVING houses, the architecture is minimalist, but optional features can be added if required, like timber cladding. The fixed price includes all electrics, plumbing, heating, decoration, fixtures and fittings, with a wide range of options available.



### LIVING TERRACED

OUTER HOUSE 117,85 m<sup>2</sup>  
INNER HOUSE 115,29 m<sup>2</sup>

\*Dan-Wood Homes retain heat at double the rate currently required under UK building regulations. The super thermal wall system has a U-Value (rate of heat loss) of just 0.18 W/m<sup>2</sup>K – less than half the maximum currently allowed under UK building regulations of 0.35 W/m<sup>2</sup>K (0.30 W/m<sup>2</sup>K in Scotland).



Dan-Wood UK Head Office  
1 Wilderhaugh  
Galashiels TD1 1QJ  
T: 01896 752271  
E: sales@dan-wood.com

[www.dan-wood.co.uk](http://www.dan-wood.co.uk)